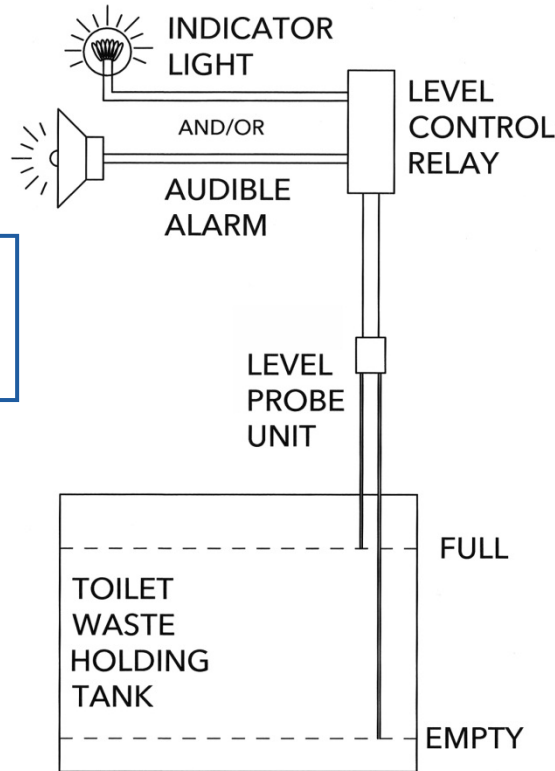


CLEGHORN WARING

24 volt d.c. HIGH-LEVEL ALARM

for Toilet Waste Holding Tanks



TOILET WASTE LEVEL MONITOR schematic

Level probes are recommended for use in toilet waste holding tanks, where float switches are unsuitable.

HIGH-LEVEL ALARM KIT contains:

- 3 probe unit
- Level control relay 24 volt d.c.
- 11 pin socket for relay
- Wiring diagram

Not included in kit:

- Indicator light
- Audible alarm

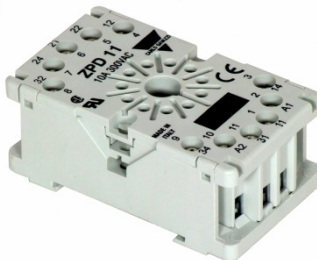
Probe system can also be used to stop pump automatically when holding tank is pumped out. Contact Cleghorn Waring for details

Probe unit CW229

Relay CW227



Socket CW228



- ◆ Warns when waste holding tank is nearly full
- ◆ No moving parts in waste holding tank
- ◆ Suitable for use with indicator light and/or audible alarm

Xylem Water Solutions UK Ltd
Bingley Road
Hoddesdon
Hertfordshire • EN11 0BU • UK

Telephone: +44 (0)1462 480380
Fax: +44 (0)1462 482422
mail@cleghorn.co.uk
www.jabscoshop.com

DOC586/11

For a.c. level control systems, please ask for our 'Black Waste Pump-Out – CW325' data sheet



Ask for details of our self-priming, solids-handling JABSCO d.c. and a.c. toilet waste pumps

xylem
Let's Solve Water